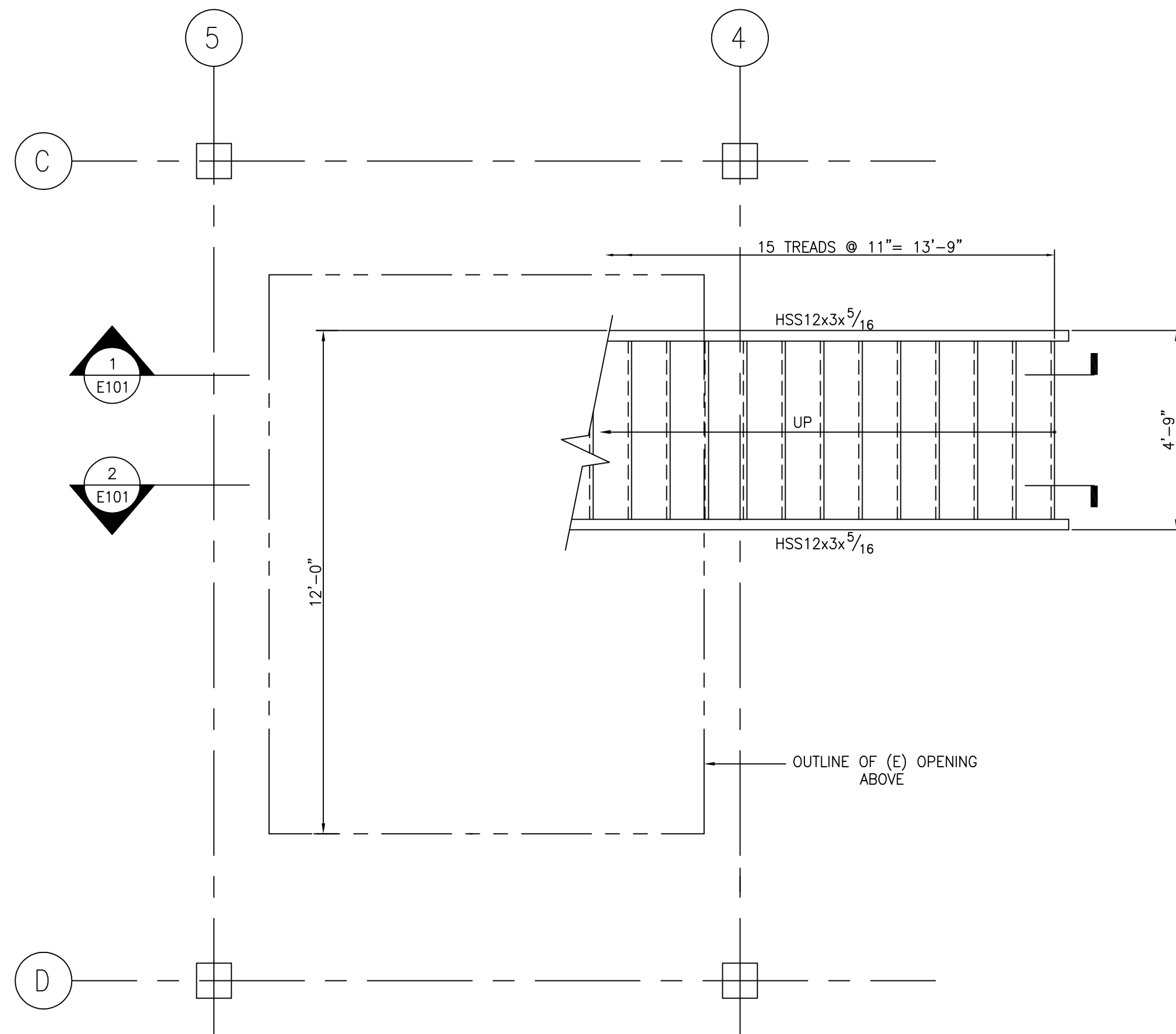


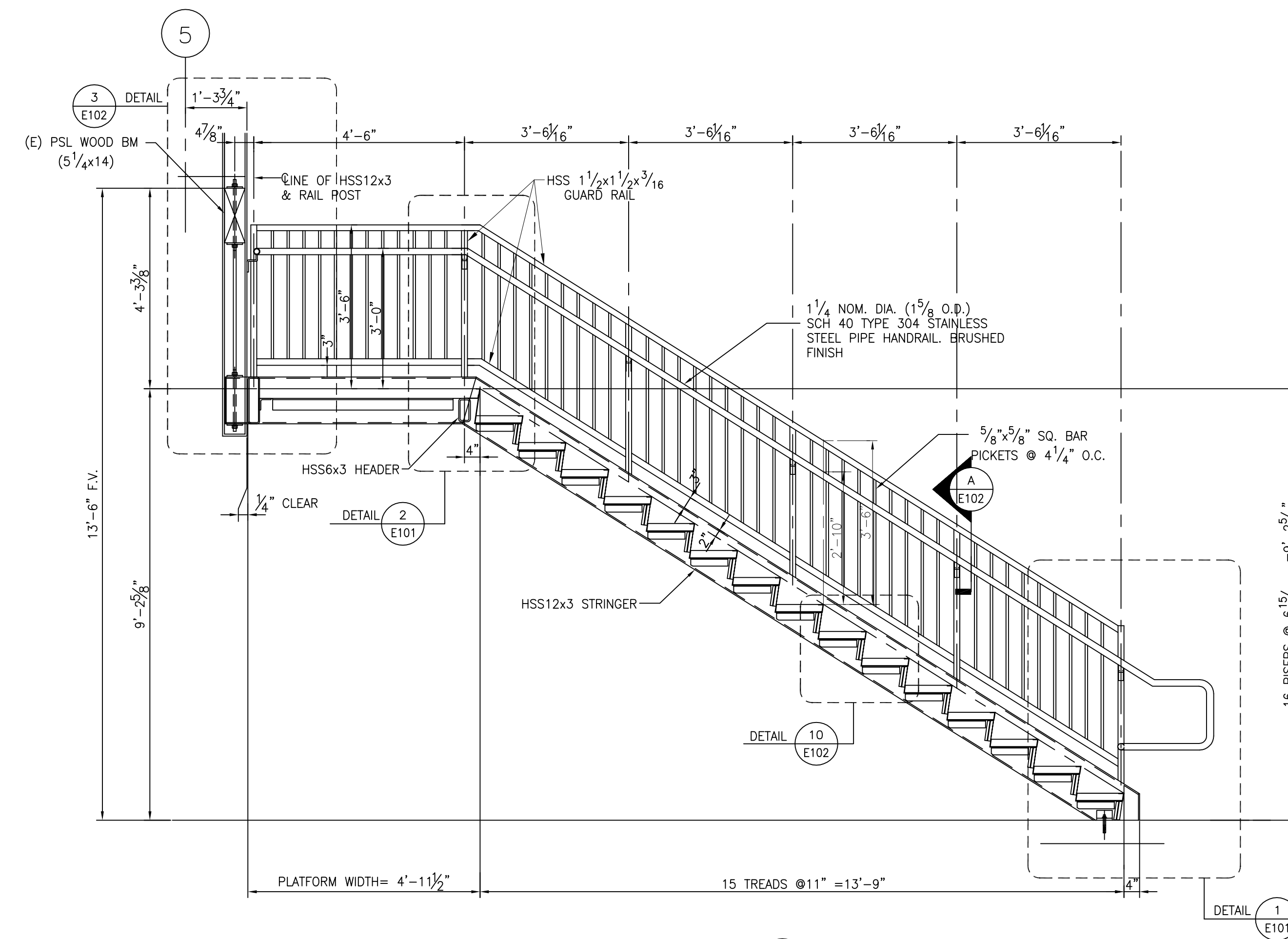
STANDARD MATERIAL SPECS UNLESS NOTED

- |                                      |                            |
|--------------------------------------|----------------------------|
| 1) ROLLED BEAM SHAPES                | ASTM A992 GR 50 (Fy=50ksi) |
| 2) CHANNELS, ANGLES, PLATES AND BARS | ASTM A36 (Fy=36ksi)        |
| 3) HSS STRUCTURAL TUBES              | ASTM A500 GR B (Fy=46ksi)  |
| 4) ANCHOR BOLTS                      | ASTM F1554 GR 36           |
| 5) WELDING ELECTRODES                | E70XX                      |
| 6) STAINLESS STEEL PIPE              | TYPE 304 STAINLESS STEEL   |
| 7) STAINLESS STEEL PLATES AND BARS   | TYPE 304 STAINLESS STEEL   |

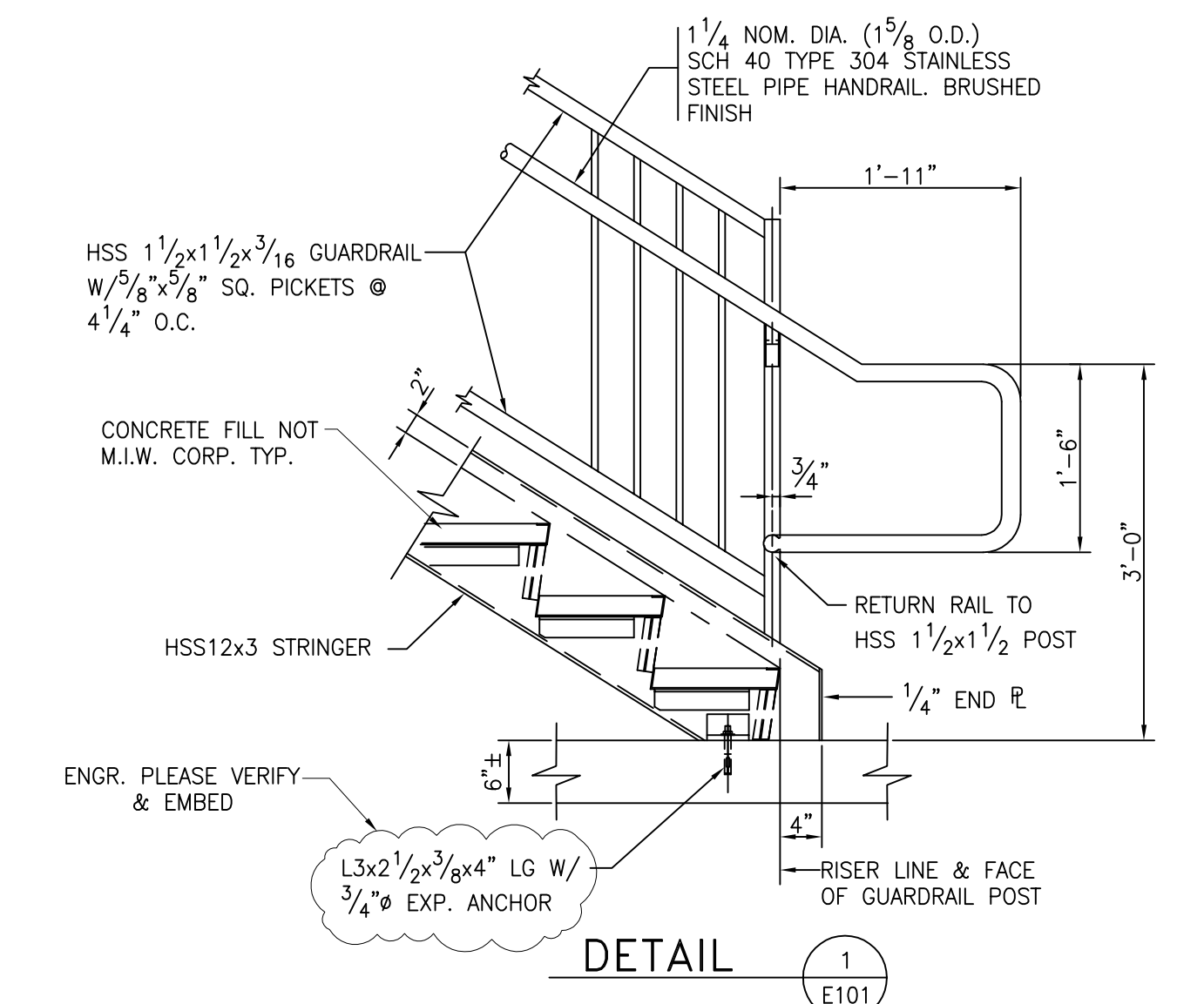


PLAN OF STAIR C /LEVEL 1 PLAN  
SCALE: 3/8"=1'-0"

- NOTES:  
1.) (E) INDICATES EXISTING  
2.) (N) INDICATES NEW

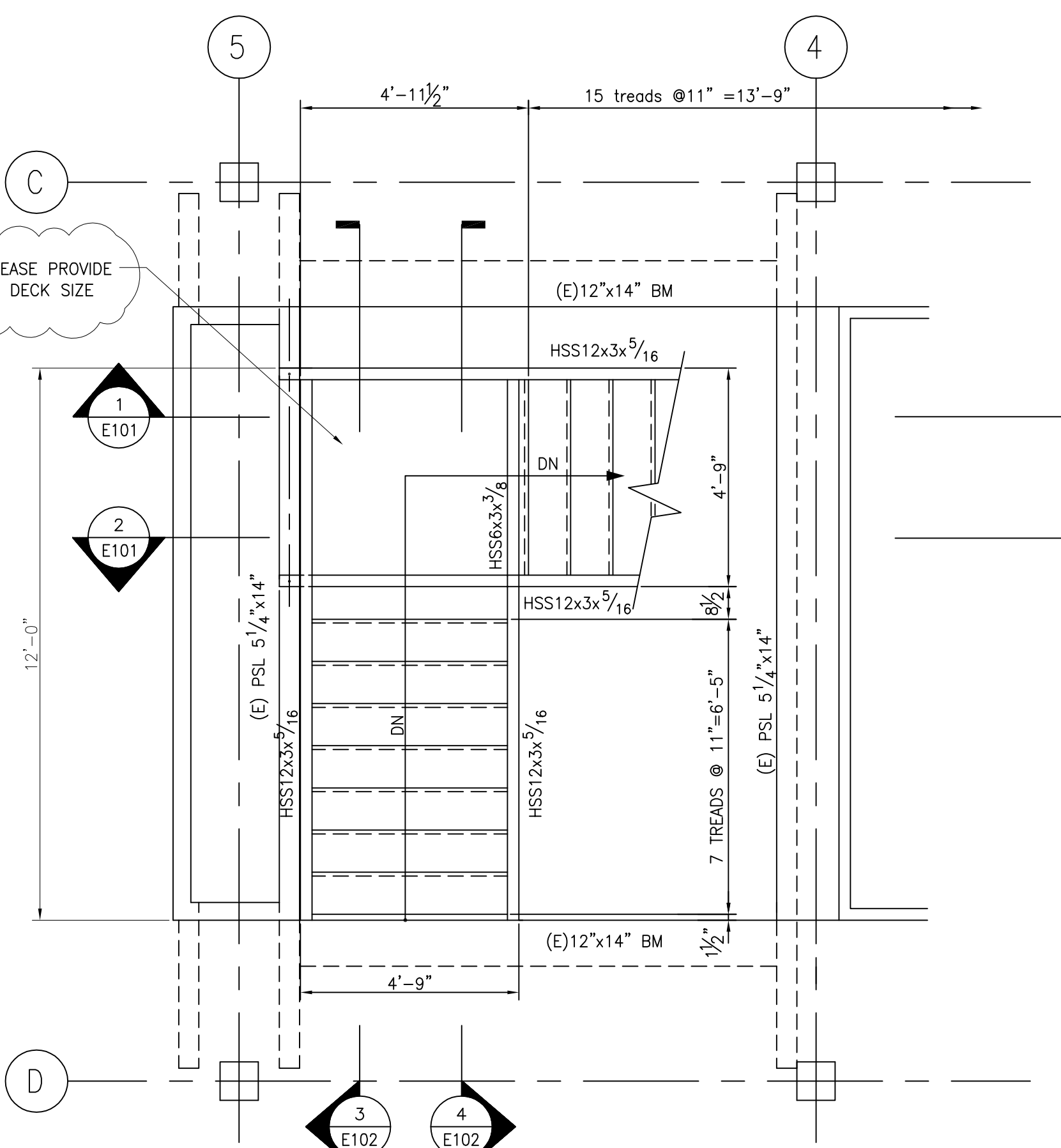


SECTION 1  
1/2"=1'-0" E101



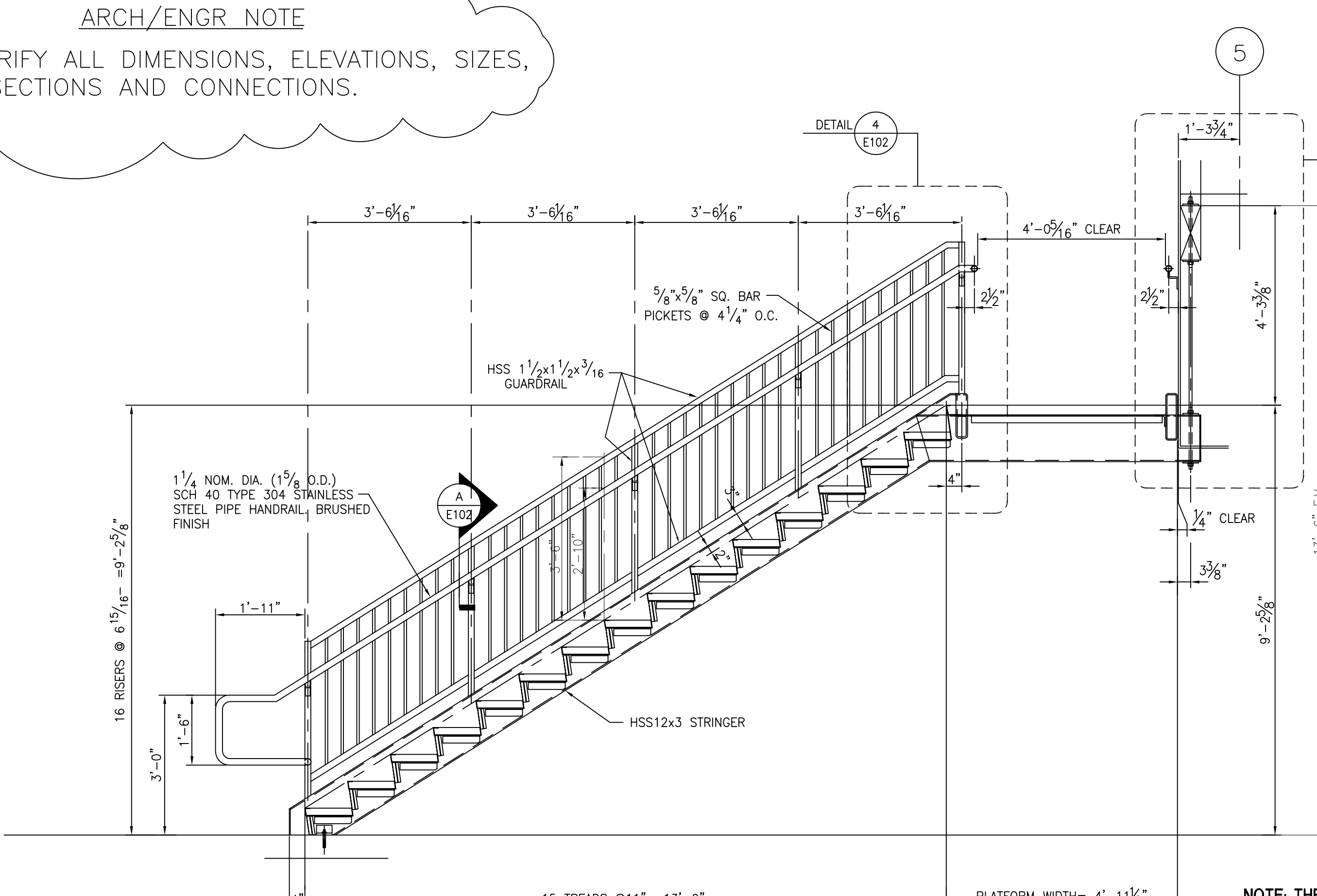
DETAIL 1 E101

ARCH/ENGR NOTE  
PLEASE VERIFY ALL DIMENSIONS, ELEVATIONS, SIZES, SECTIONS AND CONNECTIONS.

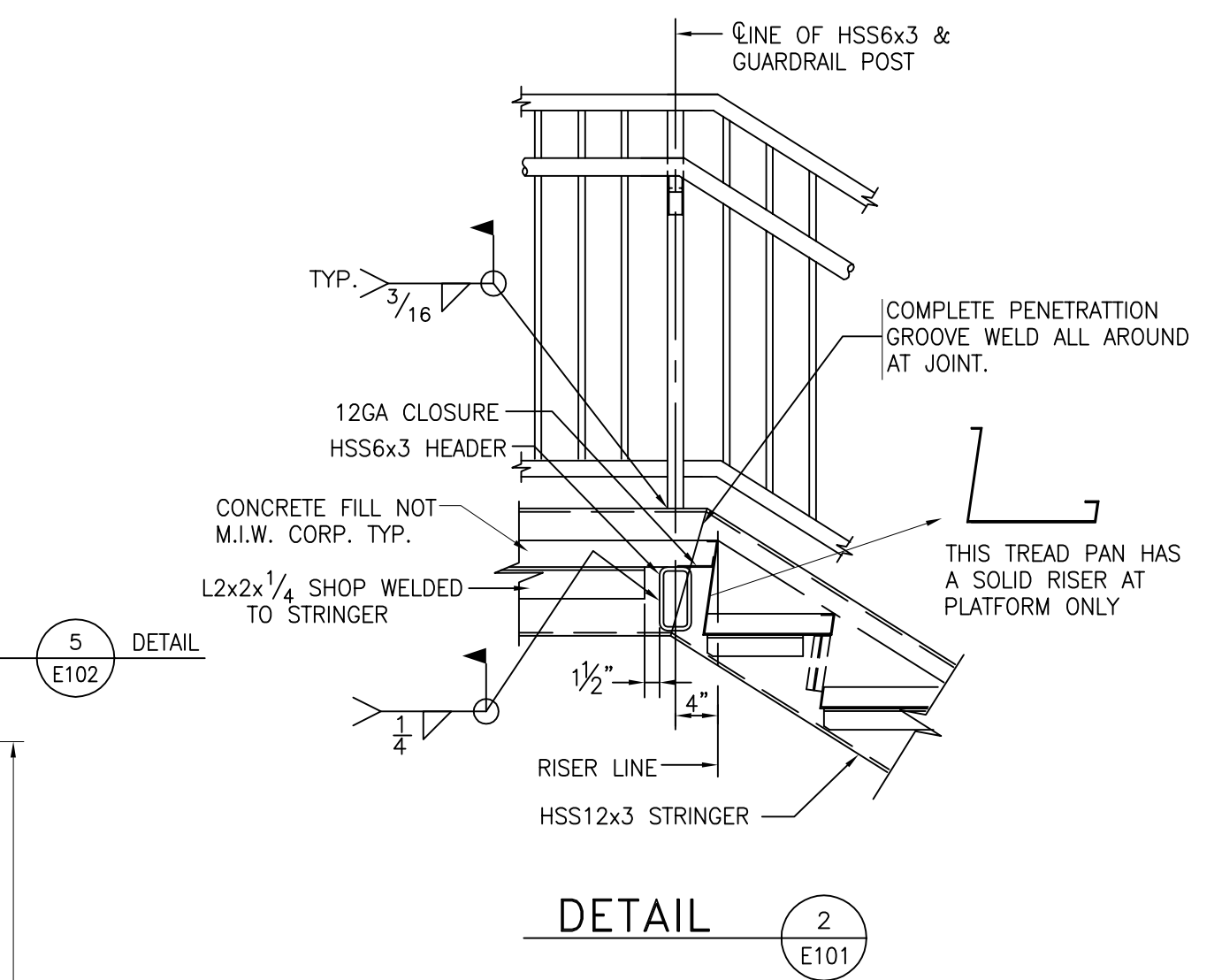


PLAN OF STAIR C /LEVEL 2 PLAN  
SCALE: 3/8"=1'-0"

- NOTES:  
1.) (E) INDICATES EXISTING  
2.) (N) INDICATES NEW



SECTION 2  
1/2"=1'-0" E101



DETAIL 2 E101

NOTE: THE ONLY STAINLESS STEEL ITEM ON THE STAIR IS THE HAND RAIL. ALL OTHER ITEMS IS CARBON STEEL.